

MEDIA COUNTERPOINT

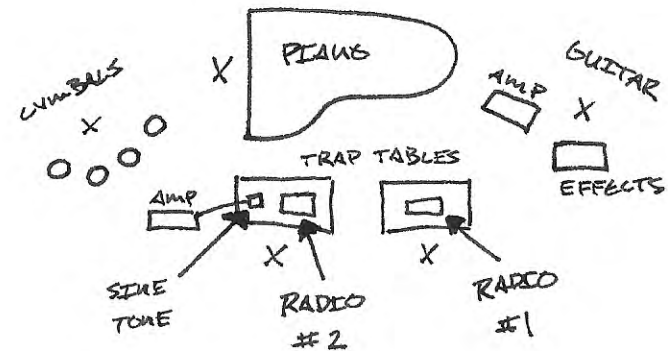
PAUL SCHUETTE

2003

PERFORMANCE NOTES

INSTRUMENTATION

SETUP



AUDIENCE

* RADIOS AND PIANO SHOULD BE MIXED

- PIANO: THE NOTATION IN THE PIANO PART IS NOT TO SCALE WITH THE 30 SECOND PER PAGE DURATION (WHERE AS THE OTHER PARTS ARE), SO ALL PIANO PARTS SHOULD BE PLAYED AT THE GIVEN TEMPO MARKING.
- ELECTRIC GUITAR: ALL LINES INDICATE PITCH
EQUIPMENT: AMPLIFIER, EBOW, MEDIUM DISTORTION, DELAY, FLANGER WITH CONTROL PEDAL, VOLUME PEDAL, AND A SLIDE.
- PERCUSSION: 4 SUSPENDED CYMBALS: 1 WITH RIVETS
1 LARGE CHINESE
- ELECTRONICS: 2 RADIOS: - NOTATION INDICATES VOLUME DIAL MARKINGS
 - TUNING SHOULD BE PRESET
 - THE STATIONS ARE OPTIONAL BUT SHOULD BE IN EXTREME CONTRAST WITH ONE ANOTHER.
- SIDE TONE OSCILLATOR: ALL LINES INDICATE PITCH
- * 2 PLAYERS ARE NEEDED TO COVER ALL ELECTRONICS PARTS

CYMBALS

SLOW-SHIMMERING
MALLETS ROLLS
pp

pp

mp

SCRAP AND SPIN
W/END OF BRUSH

mp

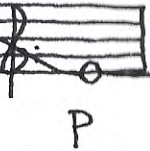
HARD CHO

f

(ANY CYMBAL MAY BE USED EXCEPT WHERE INDICATED)

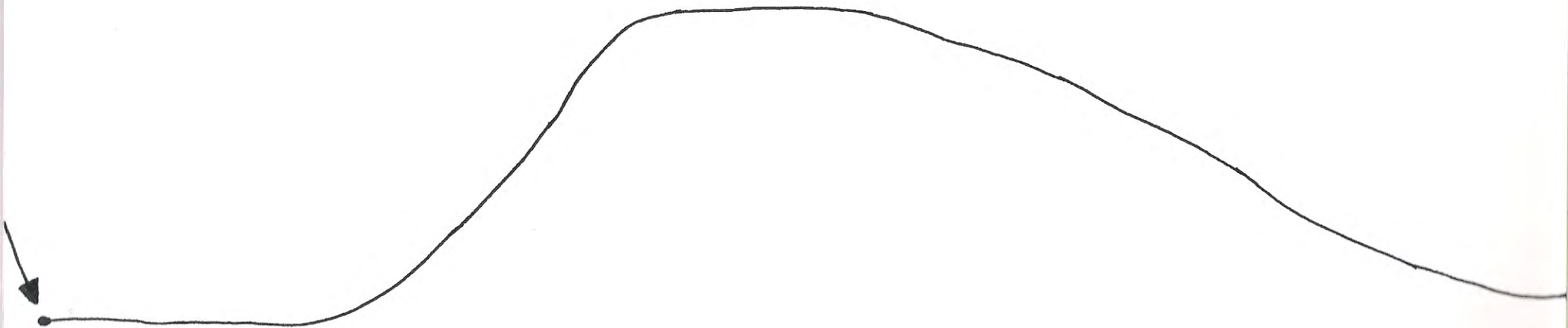
EBOW w/ SLIDE
PLUS DELAY AND DISTORTION

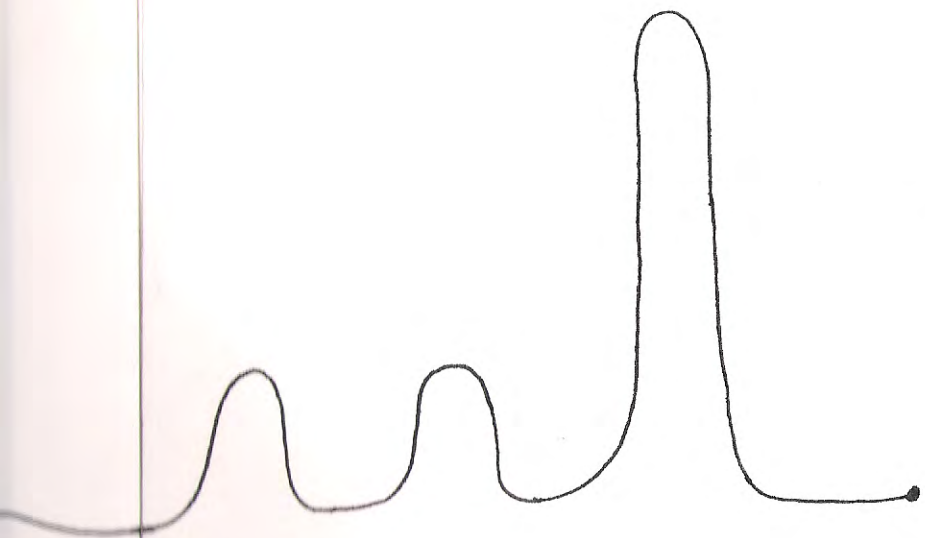
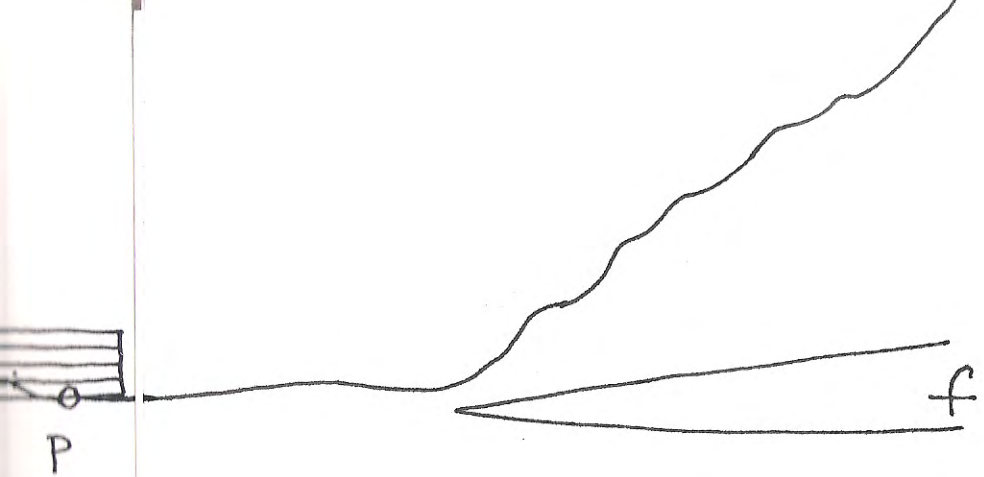
GUITAR



MALLET
KE

SYNTH-TONE
OSCILLATOR





CYMBAL
HARD Mallet
CHOKE
f

PIANO

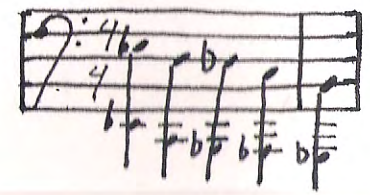
$\downarrow = 126$



SINE
TONE

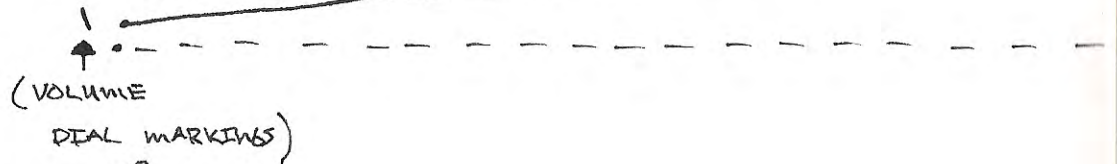
$d = 69$

ff \rightarrow mt



RADIO #1

- RADIO MAY BE TUNED TO ANY STATION



GUITAR

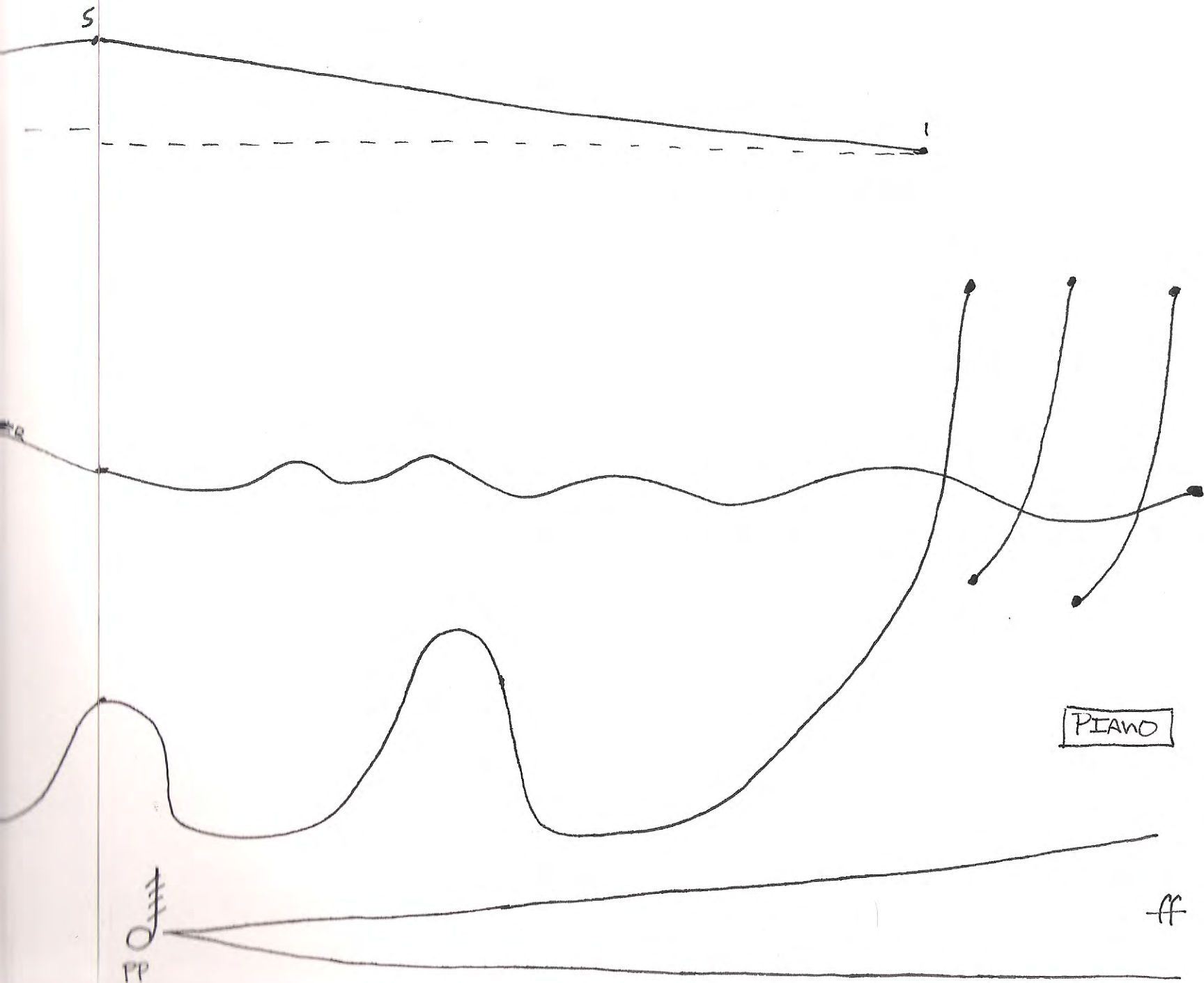
HIT RANDOM PITCHES,
USE DELAY TIMING
KNOBS TO IMITATE
DIALOGUE



CHINESE CYMBAL



RADIO
1



PIANO

$\text{♩} = 108$

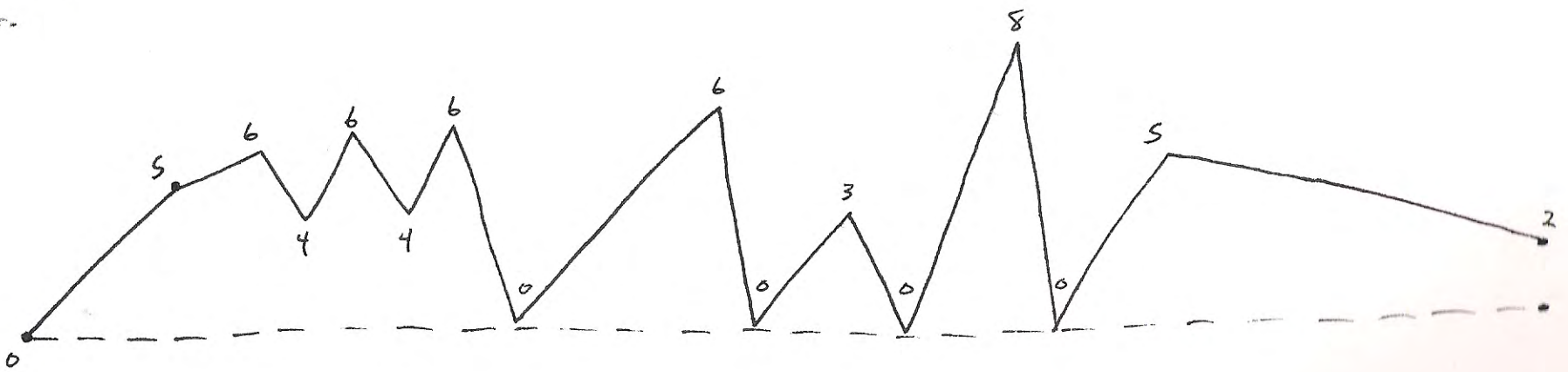
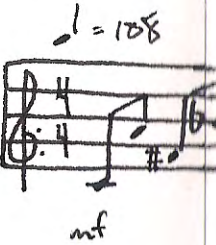
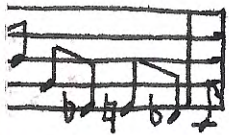
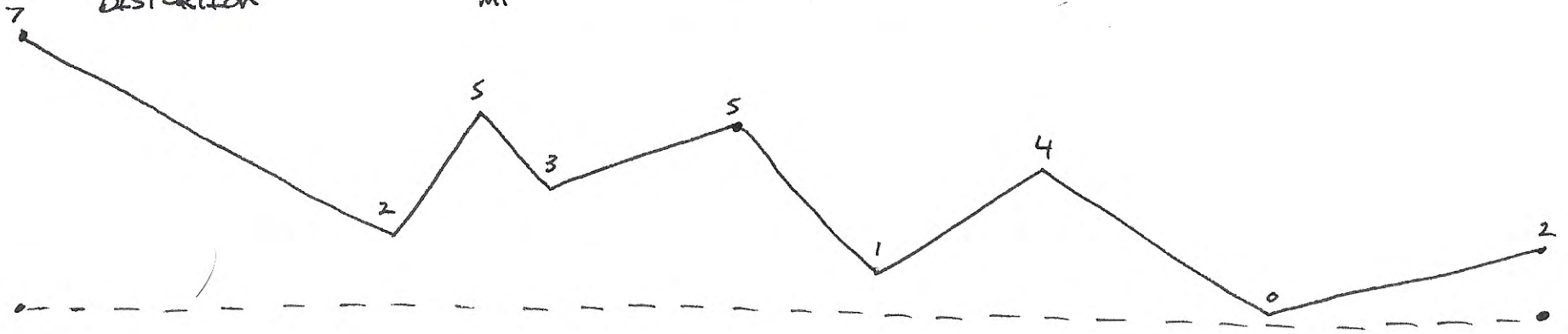
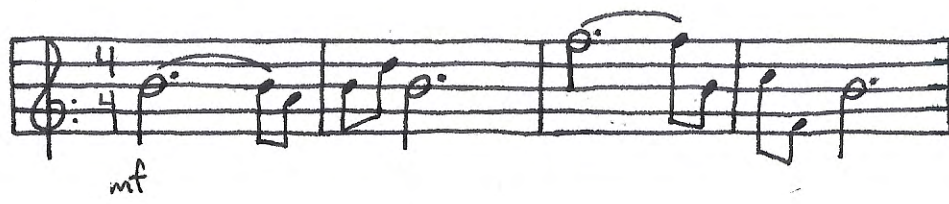
STRE
TONE

Handwritten musical notation on a grand staff (treble and bass clefs). The time signature is 4/4. The music consists of two staves of notes. The first staff begins with a treble clef, a 4/4 time signature, and a key signature of one flat (B-flat). The second staff begins with a bass clef and a 4/4 time signature. The notes are written in a simple, sketchy style.

3
4
X
/

GIUITAR

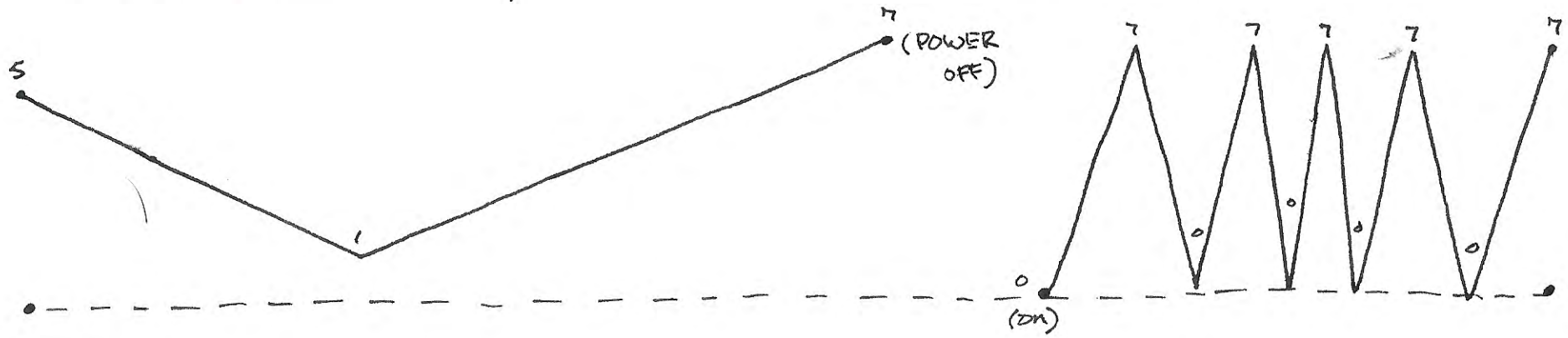
EBOW WITH SLIDE
PLUS DELAY AND
DISTORTION



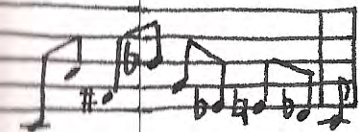
SCATTERED PIDDLING 2 to 6 NOTE RUNS IN ALL REGISTERS
(mp - mf)

ω SINGLE NOTE EXPLOSIONS IN
EXTREME REGISTERS
(ff)

SAME EFFECTS
 BUT PARTIALLY DESTROY
 WITH FLANGER
 CONTROL PEDAL



$\downarrow = 108$

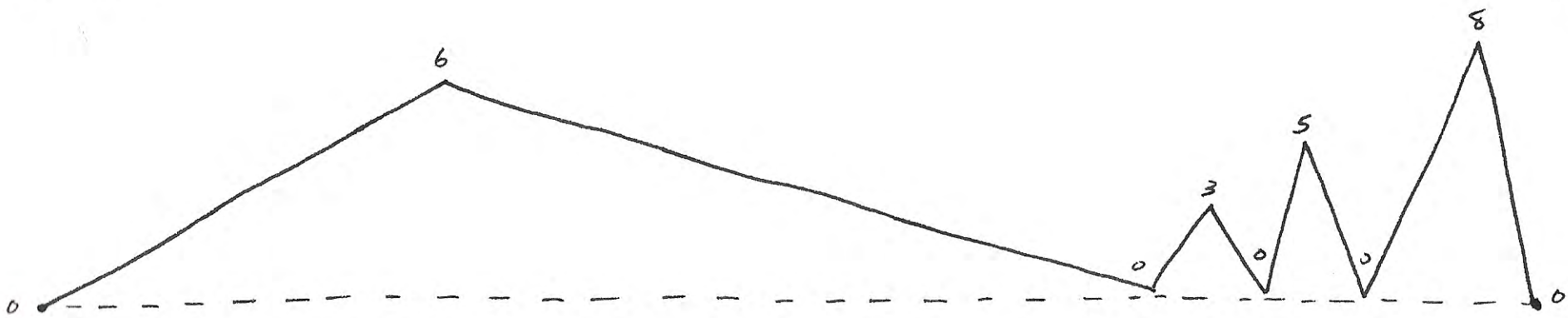


mf

$\downarrow = 108$

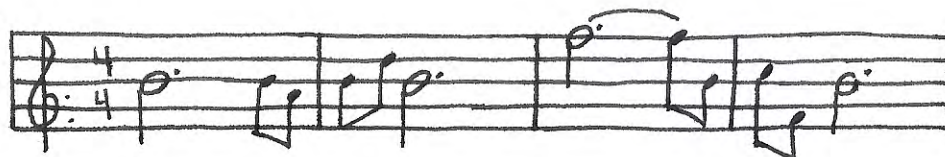


mf

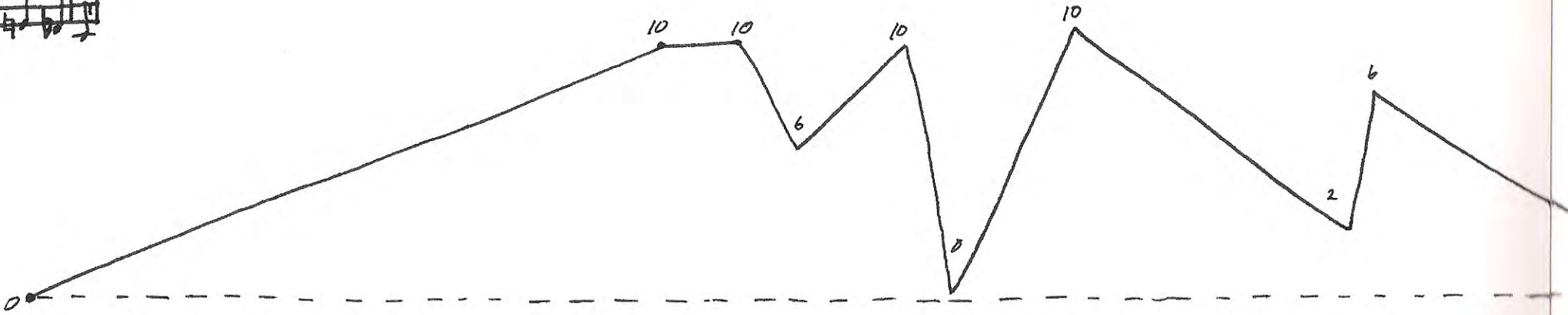
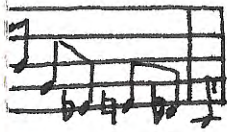
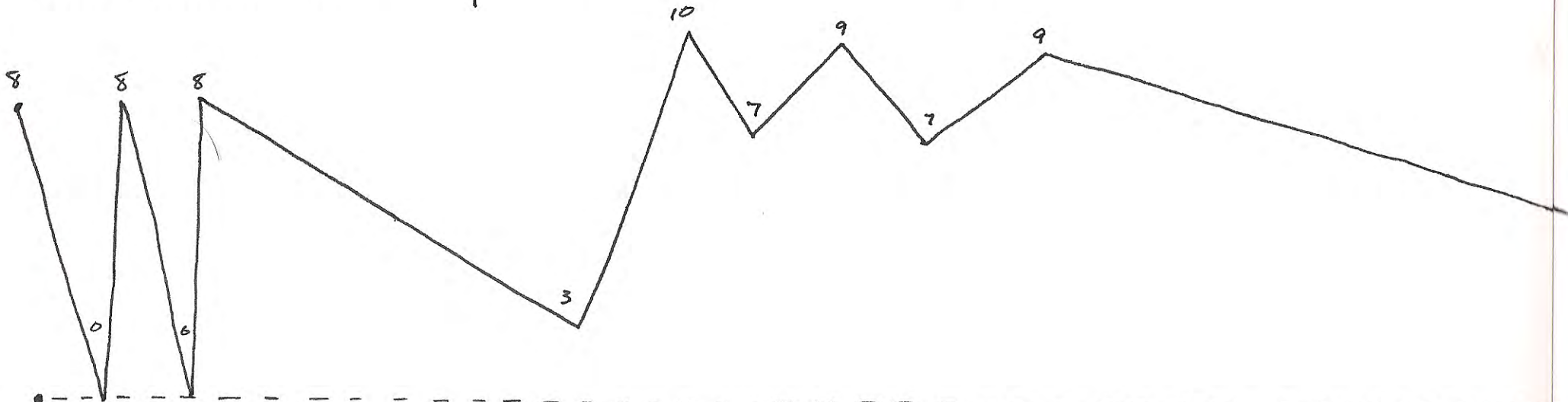


PLAY ALL PREVIOUS IDEAS WITH THE USE OF CHORDS IN THE EXECUTION OF THOSE IDEAS

- SAME EFFECTS
BUT DESTROY BEYOND
RECOGNITION WITH
FLANGER CONTROL PEDAL



f



GRADUALLY BUILD ALL IDEAS IN INTENSITY TILL END OF SECTION

P

ff

f

P

P

XXXXXXXXXX

XXXXXXXXXX

XXXXXXXXXX

ff

ff

4

8

8

8

8

2

10

0

10

0

10

10

10

2

4

0

0

5

3

0

0

$\text{♩} = 60$

(INSERT)

GUITAR

DELAY KNOB

"DIALOGUE"



CYMBALS

BRUSHES



P

$\text{♩} = 108$

8vb

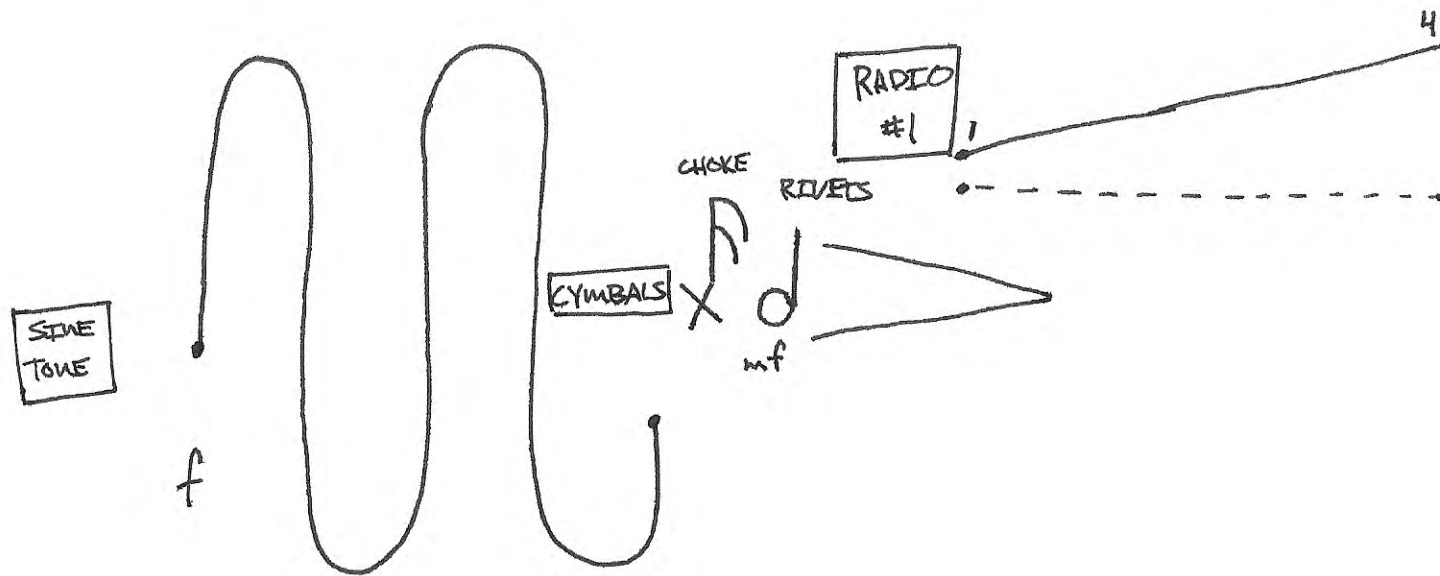
PIANO

8va

mp

GUITAR

HIT RANDOM
BARRE CHORDS ON
DESIGNATED ROOTS
- SPACING = PITCH
RELATIONS

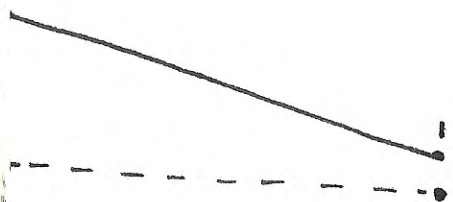


$\text{♩} = 69$

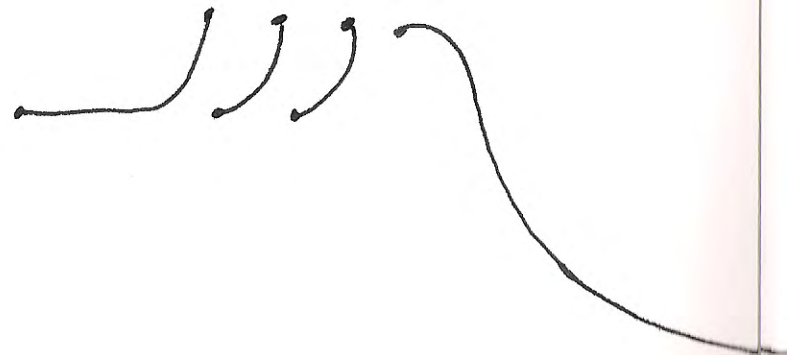
molto rit

Handwritten musical notation for guitar. The notation is in 4/4 time and consists of two measures. The notes are: C4, G4, A4, B4, C5, D5, E5, F5. Above the notes are chord symbols: C, G, D, B, A^b, B, E, B^b. The first measure has a '7' under the G note. The second measure has a '7' under the E note. The notation is labeled 'HEP' on the left.

GUITAR
 EBOW WITH SLIDE
 PLUS DELAY AND
 DISTORTION



**SINE
 TONE**



PIANO

Handwritten musical notation for piano. It features a treble clef, a 4/4 time signature, and a tempo marking of ♩ = 69. The notation shows a sequence of notes: C4, D4, E4, F4, G4, A4, B4, C5. Below the notes are dynamic markings: 'ff' (fortissimo) and 'mf' (mezzo-forte). The notes are connected by a slur.

CYMBAL



CYMBALS

START SWING PATTERN A D O L E T

f

PIANO

I T

Handwritten musical notation for piano accompaniment in 4/4 time. The top staff is in treble clef and the bottom staff is in bass clef. The music consists of quarter and eighth notes. A dynamic marking 'mf' is written below the bottom staff.

mf

Handwritten musical notation on two staves, likely representing a drum set pattern. The notation uses vertical lines and stems to indicate rhythmic patterns.

♩ = 108

PIANO

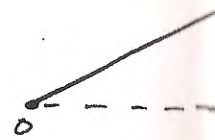
Handwritten musical notation for piano accompaniment in 4/4 time. The staff is in treble clef. The music consists of quarter and eighth notes. A dynamic marking 'f' is written below the staff.

f

GUITAR
DELAY KNOB
"DIALOGUE"



RADIO
#1



D

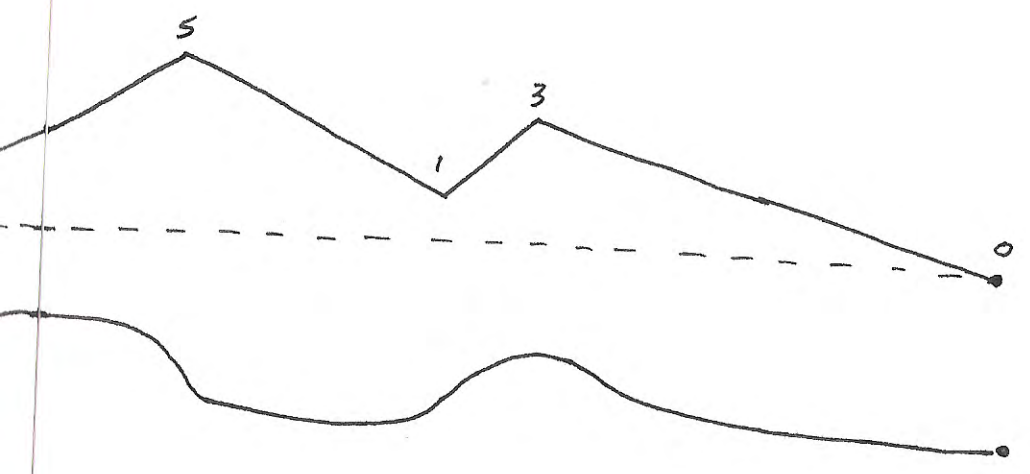
H

E
P

P

SINE
TONE





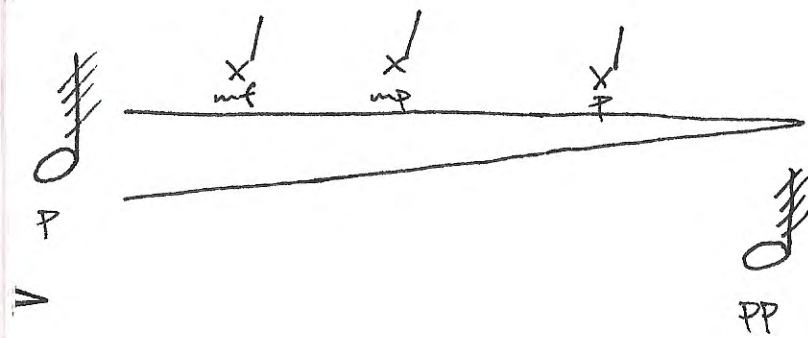
PIANO

LYMBALS

$\downarrow = 69$

f mf

mf mp mp



DAMPEN WITH
MALLET ON EDGE
TILL DEAD